

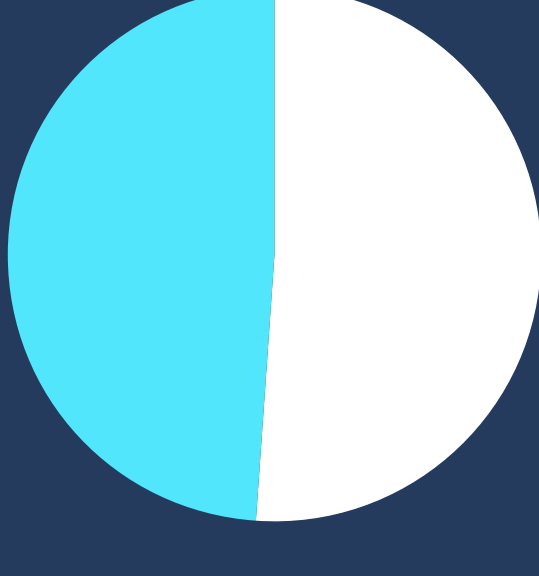
Smart, simple, practical technology for modern schools.

An end-to-end solution designed to help schools deliver innovative learning experiences, in a practical and affordable package.

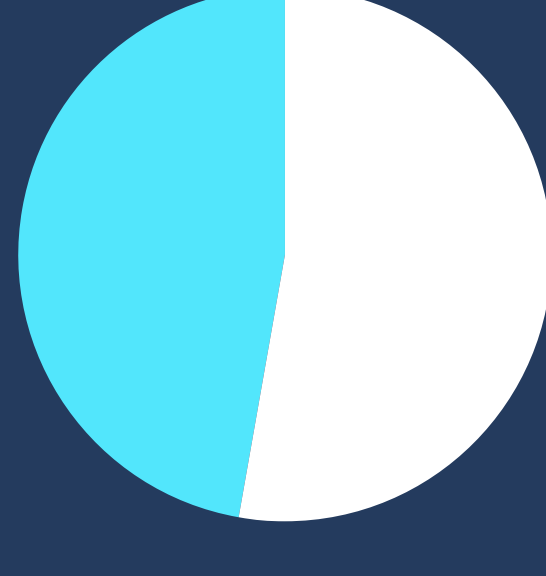
The right technology delivers measurable results in the classroom.



of teachers believe technology has a positive impact on children's lesson participation and learning.¹



of teachers feel more efficient at planning and giving lessons with technology.²



of teachers say technology helps them plan various and more exciting lessons.³

1,2,3. Gitnux, *Technology in Education statistics: 2023 Trends*, January 2023

1 Designed for students

A quality, affordable device that can deliver multi-dimensional learning opportunities for students from kindergarten to year 12.

With Surface Laptop SE, students also leave high school equipped with essential computing skills and practical experience with the Microsoft platform – skills which will be vital in further study and in the workplace.

Learn in new ways

with intuitive apps for learning, like Minecraft for Education and support for video editing, music and art apps.

Ensure accessibility

with tools and stickers to ensure all students get the most from their device.

Stay secure with powerful protection for schoolwork and user data.

Build a future foundation

with the Microsoft platform, including Windows, Office 365 and Teams.

Learn from anywhere

with offline and online working modes for hybrid learning.

Lightweight and durable

with long battery life and fast start and load times for maximum productivity.



Surface Laptop SE for Education



Clear, simple, powerful learning and collaboration.

2 Designed for teachers

Optimize results in the classroom and reduce admin, with streamlined remote teaching, grading and collaboration.

Save admin time

with cloud-integrated, intuitive applications.

Collaborate effectively

from anywhere, with other staff, students and I.T.

Improve the ability to guide students by

using the same platform and apps.

Reduce distractions

and increase students' focus with engaging, easy to use tools for learning.

Offer consistent and customized learning experiences from K-12.

Have confidence your apps and data are secure and protected.

3 Designed for IT staff

The modern management tools available with Surface Laptop SE help reduce time-consuming administrative and security tasks for already overworked IT teams – freeing them to focus on more strategic initiatives.

Reduce workload

with simple, cloud-first deployment.

Stay protected

with security from device to cloud.

Simplify management

with modern, cloud-based tools: Intune and Autopilot.

Deploy faster

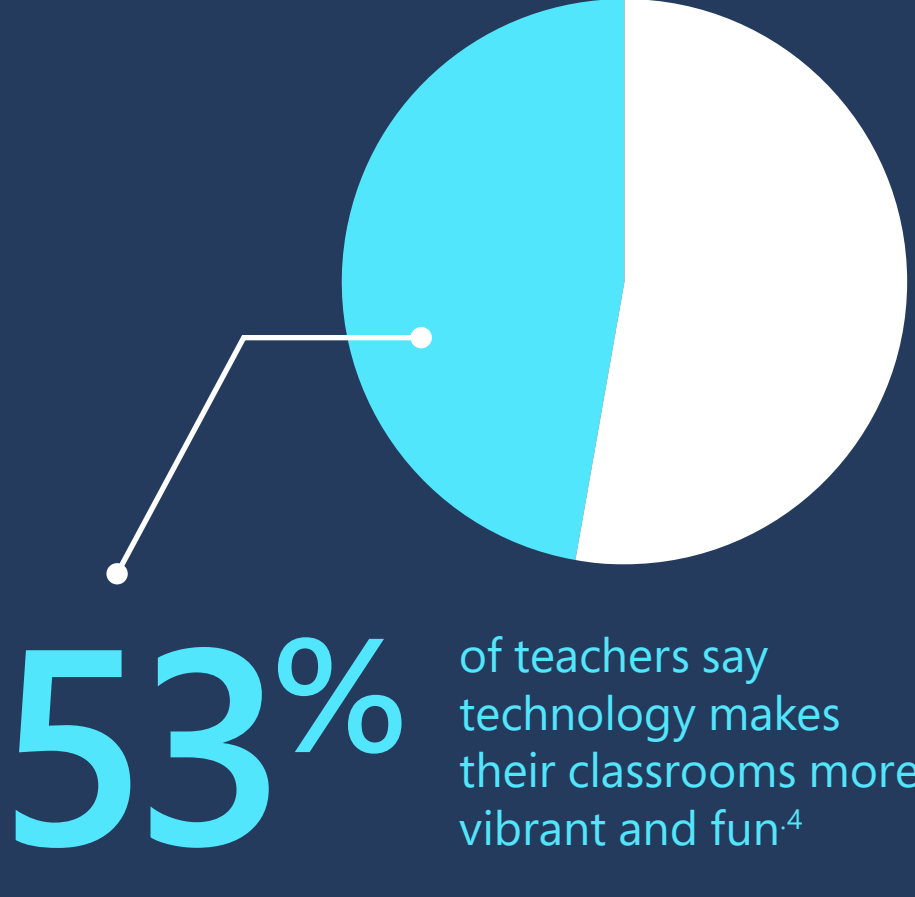
with pre-loaded Microsoft Office Win32 apps.

Control downloads

and device deployment and management with IT-only access.

Maintain central control

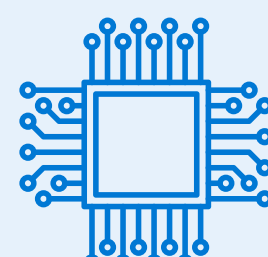
while easily managing devices.



4. Gitnux, *Technology in Education statistics: 2023 Trends*, January 2023



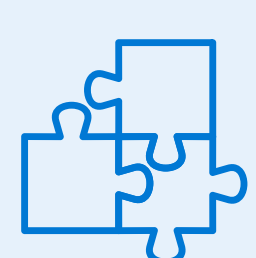
Advanced storage with eMMC type drive for fast transfer.



Intel® Celeron® N4020 for fast processing.



Lightweight design for easy transport and storage.



Built-in apps for seamless learning and upload.

“

1 in 4 U.S. schools were victims of a cyberattack in 2022⁵

”

5. DarkReading, *New survey: One in four schools were victims of cyberattacks in the last year*, January 2023

Is your school ready?

For a seamless deployment of Surface Laptop SE, your school will need to have the following as a minimum:

Microsoft 365 A3 or A5 licensing and a live Microsoft 365 tenant for students so their profiles, apps and tools can be provisioned.

Azure Active Directory for cloud-based deployment.

Speak to your Microsoft partner if you want to learn more about how to get started.