

SPECIAL DISTRICTS

**UNDERSTANDING THE
SPECIAL DISTRICTS 2021-2022
FUNDING LANDSCAPE &
EMERGING OPPORTUNITIES**

SPONSORED BY:



August 18, 2021
#govtechlive



SPECIAL DISTRICTS

**UNDERSTANDING THE SPECIAL DISTRICTS 2021-2022
FUNDING LANDSCAPE & EMERGING OPPORTUNITIES**

FEATURED SPEAKERS

Gloria Salazar

*Chief Executive Officer,
San Joaquin Regional
Transit District*

Angelina Benedetti

*Interim Director of Library Outreach,
Programs and Services for the King
County Library System (KCLS),
King County, WA*

Joe Morris

*Deputy Chief Innovation
Officer, e.Republic*

MODERATOR Dustin Haisler

Chief Innovation Officer, e.Republic



SPECIAL DISTRICTS

**UNDERSTANDING THE SPECIAL DISTRICTS 2021-2022
FUNDING LANDSCAPE & EMERGING OPPORTUNITIES**

AGENDA

- 1. 2021-2022 Funding Landscape Presentation and Q&A with Joe Morris**
- 2. In the Trenches – Fireside Chat with Gloria Salazar**
- 3. In the Trenches – Fireside Chat with Angelina Benedetti**
- 4. Open Q&A**



SPECIAL DISTRICTS

**UNDERSTANDING THE SPECIAL DISTRICTS 2021-2022
FUNDING LANDSCAPE & EMERGING OPPORTUNITIES**

FEATURED SPEAKER

Joe Morris

Deputy Chief Innovation Officer, e.Republic



SPECIAL DISTRICTS

UNDERSTANDING THE SPECIAL DISTRICTS 2021-2022
FUNDING LANDSCAPE & EMERGING OPPORTUNITIES

Fiscal Relief Fund Allocations

Type	Amount (\$ billions)
States & District of Columbia	\$195.3
Counties	\$65.1
Metropolitan Cites	\$45.6
Tribal Governments	\$20.0
Territories	\$4.5
Non-Entitlement Units of Local Government	\$19.5



SPECIAL DISTRICTS

UNDERSTANDING THE SPECIAL DISTRICTS 2021-2022
FUNDING LANDSCAPE & EMERGING OPPORTUNITIES

What about Special Districts?

- The statute authorizes state, territorial and tribal governments; counties; metropolitan cities; and non-entitlement units of local government **to transfer amounts paid from the Fiscal Recovery Funds to a number of specified entities**. By permitting these transfers, Congress recognized the importance of providing flexibility to governments seeking to achieve the greatest impact with their funds, including working with other levels or units of government or private entities to assist recipient governments in carrying out their programs.
- This includes **special-purpose districts that perform specific functions in the community, such as fire, water, sewer or mosquito abatement districts**. Specifically, under section 602(c)(3), a State, territory, or Tribal government may transfer funds to a “private nonprofit organization . . . a Tribal organization . . . a public benefit corporation involved in the transportation of passengers or cargo, or a special-purpose unit of State or local government.”



SPECIAL DISTRICTS

UNDERSTANDING THE SPECIAL DISTRICTS 2021-2022
FUNDING LANDSCAPE & EMERGING OPPORTUNITIES

Timing of Funds

- **Local governments** will receive funds in two tranches, with 50% provided beginning in May 2021 and the balance delivered approximately 12 months later.
- **State governments** that have experienced a net increase in the unemployment rate of more than 2 percentage points from February 2020 to the latest available data as of the date of certification will receive their full allocation of funds in a single payment; other states will receive funds in two equal tranches.



SPECIAL DISTRICTS

UNDERSTANDING THE SPECIAL DISTRICTS 2021-2022
FUNDING LANDSCAPE & EMERGING OPPORTUNITIES

Eligible Uses



Support Public Health Response

Fund COVID-19 mitigation efforts, medical expenses, behavioral healthcare, and certain public health and safety staff



Replace Public Sector Revenue Loss

Use funds to provide government services to the extent of the reduction in revenue experienced due to the pandemic



Water and Sewer Infrastructure

Make necessary investments to improve access to clean drinking water and invest in wastewater and stormwater infrastructure



Address Negative Economic Impacts

Respond to economic harms to workers, families, small businesses, impacted industries, and the public sector



Premium Pay for Essential Workers

Offer additional support to those who have and will bear the greatest health risks because of their service in critical infrastructure sectors



Broadband Infrastructure

Make necessary investments to provide unserved or underserved locations with new or expanded broadband access



SPECIAL DISTRICTS

UNDERSTANDING THE SPECIAL DISTRICTS 2021-2022
FUNDING LANDSCAPE & EMERGING OPPORTUNITIES

Deadlines

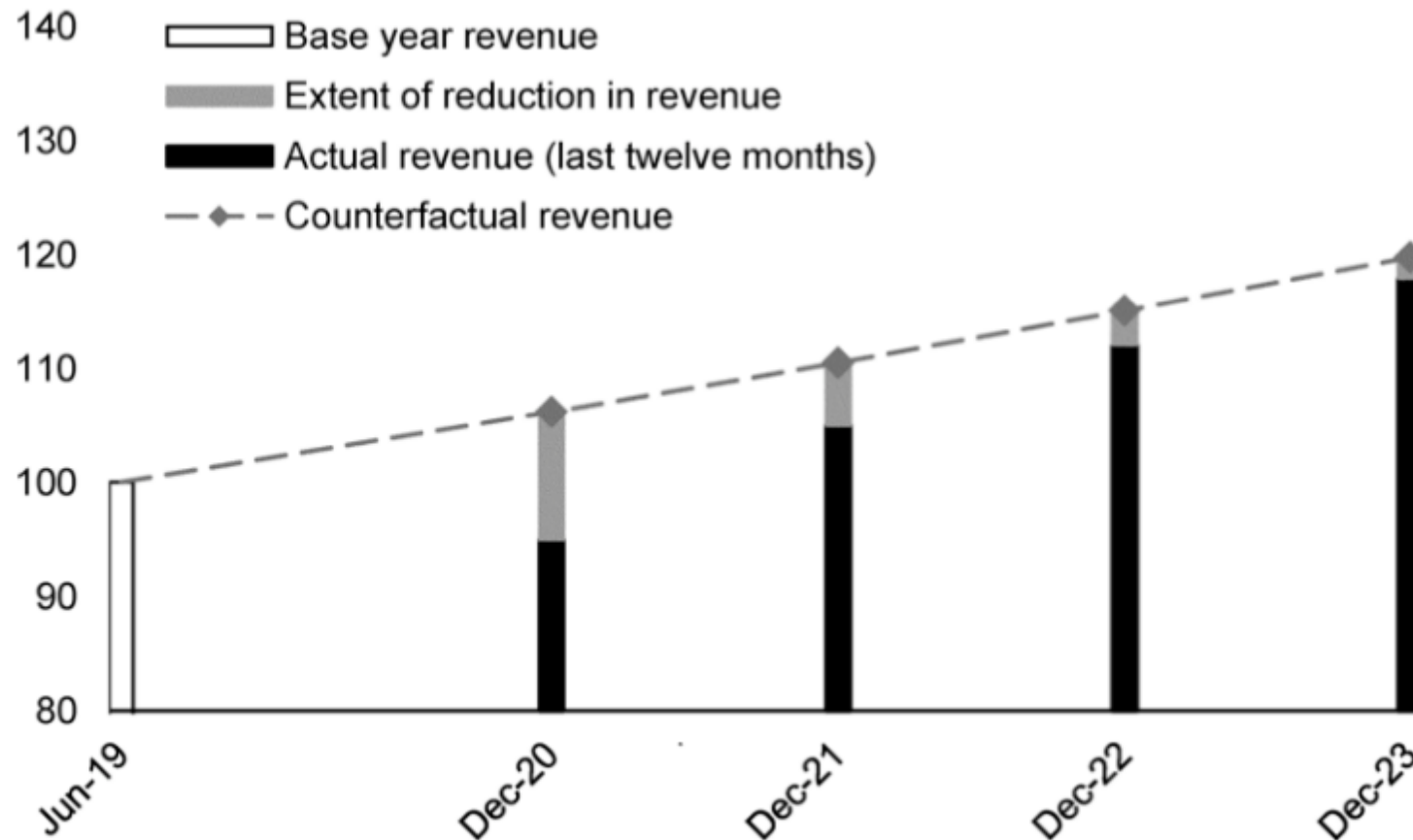
- Section 602(c)(1) and section 603(c)(1) require that payments from the Fiscal Recovery Funds be used only to cover costs incurred by the state, territory, tribal government or local government by **December 31, 2024**.
- **Flexibility:** Projects funded with these funds must be completed by **December 2026**.



SPECIAL DISTRICTS

UNDERSTANDING THE SPECIAL DISTRICTS 2021-2022
FUNDING LANDSCAPE & EMERGING OPPORTUNITIES

Fiscal Relief: Revenue Loss





SPECIAL DISTRICTS

UNDERSTANDING THE SPECIAL DISTRICTS 2021-2022
FUNDING LANDSCAPE & EMERGING OPPORTUNITIES

Calculating Revenue Loss

- Recipients can use these funds for the provision of government services to the the extent of the revenue reduction experienced during COVID-19 health emergency.
- **“General Revenue”**: Revenues collected by a government that are generated from its underlying economy including taxes.
- What’s **included**?
 - Taxes, fees and other revenues to support government services
 - Other fees: Parking, ports, zoos, etc.
- What’s **not** included?
 - Federal transfer funds, intergovernmental funds, refunds, utilities revenues, refunds, insurance of debt proceeds and liquor store revenues



SPECIAL DISTRICTS

UNDERSTANDING THE SPECIAL DISTRICTS 2021-2022 FUNDING LANDSCAPE & EMERGING OPPORTUNITIES

GFOA Revenue Loss Calculator

Base Year Revenue Worksheet

Fiscal Year Ended **6/30/2019**

Revenue Source	Base Revenue (Y/N)	Amount
Taxes Amount of tax collections for all taxes imposed by the government.		
Property Tax		
Property Tax	Y	\$ 1
Sales and Gross Receipts Tax		
General Sales and Use Tax	Y	\$ -
Selective Sales Tax		
Alcoholic Beverage	Y	\$ -
Amusements Sales Tax	Y	\$ -
Motor Fuels Sales Tax	Y	\$ -
Parimutuels Tax	Y	\$ -
Public Utilities Sales Tax	Y	\$ -
Tobacco Products Tax	Y	\$ -
Other Sales Tax	Y	\$ -
Licensing and Permit Taxes		
Alcoholic Beverage Licensing and Permits	Y	\$ -
Building/Construction Permits	Y	\$ -
Amusements Licensing and Permits	Y	\$ -
Motor Vehicles Licensing and Permits	Y	\$ -
Public Utilities Licensing and Permits	Y	\$ -
Occupation and Business Licensing and Permits	Y	\$ -
Other Licensing and Permits	Y	\$ -
Income Tax		
Individual Income Tax	Y	\$ -
Corporate Income Tax	Y	\$ -
License and Permit Tax		
Alcoholic Beverage	Y	\$ -
Amusements	Y	\$ -
Motor Vehicles	Y	\$ -
Public Utilities	Y	\$ -
Occupational and Business Licenses	Y	\$ -
Other Selective Sales	Y	\$ -
Other Taxes		
Death and Gift Tax	Y	\$ -
Documentary and Stock Transfer Tax	Y	\$ -
Severance Tax	Y	\$ -
Other	Y	\$ -

GFOA Revenue Loss Calculator

Background Information

1) Fiscal Year End **June**

Base Year Revenue Period **6/30/2019** FY used for base year calculation

2) Calculation Date **12/31/2020**

Number of Months **18** Months between Base Year and Calculation Date

Estimate Revenue

3) Base Year Revenue **\$ 1** [Use Worksheet to Calculate](#)

4) Growth Rate **4.1%** [Use Worksheet to Calculate](#)

Counterfactual Revenue **\$ 1** Estimated Revenue Without Pandemic

5) Actual Revenue **\$ 1** [Use Worksheet to Calculate](#)

Reduction in Revenue Fiscal Year Ended **12/31/2020**

Revenue Reduction **\$ 0**

Revenue Reduction % **-5.8%**



SPECIAL DISTRICTS

UNDERSTANDING THE SPECIAL DISTRICTS 2021-2022
FUNDING LANDSCAPE & EMERGING OPPORTUNITIES

Eligible Funding Areas

- **Government Services** can include but are not limited to maintenance or pay-go funded building of infrastructure including:
 - Roads;
 - Modernization of **cybersecurity** including hardware and software & protection of critical infrastructure,
 - Health services;
 - Environmental remediation;
 - School or educational services;
 - Provision of police, fire and emergency services



SPECIAL DISTRICTS

UNDERSTANDING THE SPECIAL DISTRICTS 2021-2022
FUNDING LANDSCAPE & EMERGING OPPORTUNITIES

ARPA Fiscal Relief: Infrastructure & Broadband

- The Interim Final Rule outlines eligible uses within each category, allowing for a broad range of necessary investments in projects that **improve access to clean drinking water, improve wastewater and stormwater infrastructure systems, and provide access to high-quality broadband service.**
- Necessary investments are designed to provide an adequate minimum level of service and are unlikely to be made using private sources of funds.



SPECIAL DISTRICTS

UNDERSTANDING THE SPECIAL DISTRICTS 2021-2022
FUNDING LANDSCAPE & EMERGING OPPORTUNITIES

Broadband

- The Interim Final Rule provides that eligible investments in broadband are those that are designed to provide services meeting adequate speeds and are provided to unserved and underserved households and businesses.
- Eligible projects are expected to be designed to deliver, upon project completion, service that reliably meets or exceeds **symmetrical upload and download speeds of 100 Mbps**.
- The Interim Final Rule treats users as being unserved or underserved if they lack access to a wireline connection capable of reliably delivering at least minimum speed of **25 Mbps download and 3 Mbps upload** as households and businesses lacking this level of access are generally not viewed as being able to originate and receive high-quality voice, data, graphics and video telecommunications.



SPECIAL DISTRICTS

UNDERSTANDING THE SPECIAL DISTRICTS 2021-2022
FUNDING LANDSCAPE & EMERGING OPPORTUNITIES

Infrastructure Improvements

- **Water** - Recipients may use Fiscal Recovery Funds to invest in a broad range of projects that improve drinking water infrastructure, such as building or upgrading facilities and transmission, distribution and storage systems, including replacement of lead service lines.
- **Wastewater** - Recipients may use Fiscal Recovery Funds to construct publicly owned treatment infrastructure, manage and treat stormwater or subsurface drainage water, facilitate water reuse and secure publicly owned treatment works, among other uses.
- *Each of the state programs established under the CWSRF have the flexibility to direct funding to their particular environmental needs, and each state may also have its own statutes, rules and regulations that guide project eligibility.*



SPECIAL DISTRICTS

UNDERSTANDING THE SPECIAL DISTRICTS 2021-2022
FUNDING LANDSCAPE & EMERGING OPPORTUNITIES

What's Next? The Infrastructure Bill

- Infrastructure Deal
 - Repair roads, bridges etc.
 - Build a national network of electronic vehicle chargers
 - Make necessary improvements to water infrastructure and public transit
 - Invest \$65 billion into broadband
 - Cybersecurity

	Amount (billions)
Total	\$579
<u>Transportation</u>	<u>\$312</u>
Roads, bridges, major projects	\$109
Safety	\$11
Public transit	\$49
Passenger and Freight Rail	\$66
EV infrastructure	\$7.5
Electric buses / transit	\$7.5
Reconnecting communities	\$1
Airports	\$25
Ports & Waterways	\$16
Infrastructure Financing	\$20
<u>Other Infrastructure</u>	<u>\$266</u>
Water infrastructure	\$55
Broadband infrastructure	\$65
Environmental remediation	\$21
Power infrastructure incl. grid authority	\$73
Western Water Storage	\$5
Resilience	\$47



SPECIAL DISTRICTS

UNDERSTANDING THE SPECIAL DISTRICTS 2021-2022
FUNDING LANDSCAPE & EMERGING OPPORTUNITIES

Key Takeaways

- **Temporary & Transformational:** These are one-time funds that can have an impact.
- **Be Mindful:** Be mindful of the “funding cliff”
- **Follow the Money:** These funds won’t necessarily stop with the prime recipient...each jurisdiction will have their own approach to distributing funds.
- **Invest Now to Save Later:** Thoughtful investments in technology including cybersecurity and broadband will help to better serve constituents now and reduce costs long-term.
- **Immediate investments:** Look to make an immediate impact by investing in solutions that deliver long-term benefits.
- **Partnering:** Explore collaboration and partnering to pool funds to maximize the impact of the funds.



SPECIAL DISTRICTS

**UNDERSTANDING THE SPECIAL DISTRICTS 2021-2022
FUNDING LANDSCAPE & EMERGING OPPORTUNITIES**

Funding Q&A with Joe Morris



SPECIAL DISTRICTS

**UNDERSTANDING THE SPECIAL DISTRICTS 2021-2022
FUNDING LANDSCAPE & EMERGING OPPORTUNITIES**

FEATURED SPEAKER

Gloria Salazar

*Chief Executive Officer,
San Joaquin Regional Transit District*



SPECIAL DISTRICTS

**UNDERSTANDING THE SPECIAL DISTRICTS 2021-2022
FUNDING LANDSCAPE & EMERGING OPPORTUNITIES**

FEATURED SPEAKER

Angelina Benedetti

*Interim Director of Library Outreach, Programs and
Services for the King County Library System (KCLS),
King County, WA*



KCLS COVID Response

equity · technology ·

access

Special Districts: Understanding the Special
Districts 2021-2022 Funding Landscape &
Emerging Opportunities

August 18, 2021

Angelina Benedetti, Interim Director of Library
Outreach, Programs, and Services



Four service solutions

- Extended Wi-Fi
- Hotspots and Digital Navigation
- TeleConnect
- Lockers

Service Response



- Nimble
- Scope beyond pandemic response
- Pilot projects to build on
- Grant funded
- Partner based



Grant funded



- \$418,000 in grant funding from CARES (Coronavirus Aid Relief and Economic Security) and KCLS Foundation
- Seven separate grants
- CARES funding administered by WA State Library and King County
- KCLS Foundation



Extended Wi-Fi

45 KCLS locations

Finished January 2021

\$25,000 CARES grant from State Library

Response from local lawmakers

Impact



Hotspots and Digital Navigation



Digital Navigation



What are Digital Navigators?

“Digital Navigators are individuals who address the whole digital inclusion process — home connectivity, devices, and digital skills — with community members through repeated interactions.”

From NDIA — National Digital Inclusion Alliance - <https://www.digitalinclusion.org/>



Community Partnerships

KCLS partners with social service organizations, low-income housing providers, school districts, and agencies serving people who are experiencing homelessness to increase digital equity and access for King County's most impacted community members.

These patrons rely most heavily on in-building library services.



Service Partners

- Shelters (family, youth, singles)
- Day centers
- Transitional housing sites
- Behavioral health treatment clinics
- Confidential emergency program
- Tent Cities
- Vocational training programs
- Senior housing
- King County Housing Authority properties
- Schools





Impact

299 hot spots deployed

2400 people accessing Wi-Fi

47 laptops distributed



Stories of Impact



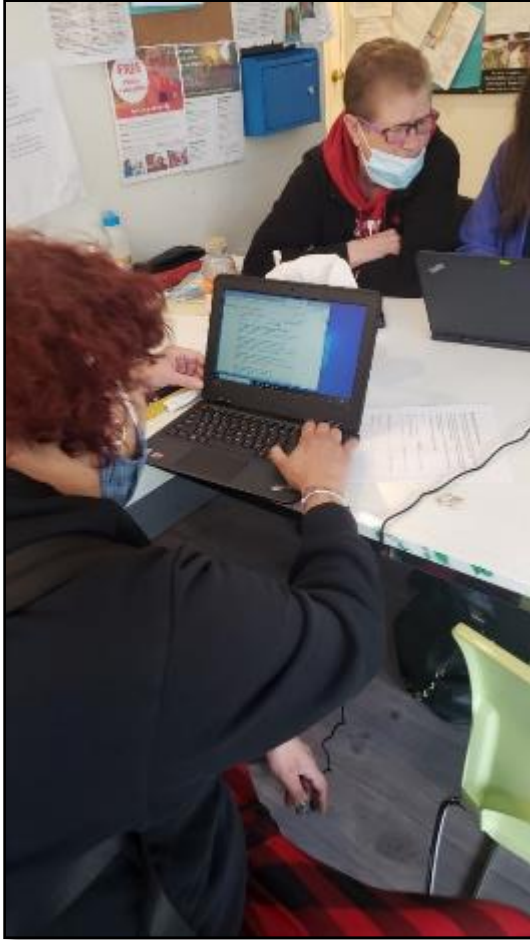
"[Client] started attending school to earn a 2 year degree to support herself and her two kids. She would have to re-watch all of her classes because her internet was spotty. Being a single mom, working part time, attending budget/parenting classes, [client] didn't have much time to spare. In some cases, [client] had to decide between working on a school assignment or watching all of her class. With the hot spot [client] can now fully participate in class and finish assignments."

- Acres of Diamonds transitional housing for families

"Clients are using the computers the whole time they are available. Before, I felt like I had to "screen" for computer use if someone wanted to look for jobs online and someone just wanted to check social media. Now because we have two computers, clients can use computer time to check their email, talk to friends/family on Facebook, read local news, browse Wikipedia for random things they're interested in, etc. I've helped a bunch of people print out bus directions, the fact that we can look up directions and go over them together in the same place I can give them the bus tickets is great."

- Downtown Emergency Services Center (DESC) shelter





Stories of Impact

"KentHOPE's Sunrise House had no access for WIFI. We were starting new programs for homeless women and children, some who were joining in an employment support program. We received a call about the availability of the WIFI units at that time. The timing was so perfect. Thanks to the King County Library, we have internet access for the women to research and apply for jobs and housing. These are vital components to the women gaining successful employment and a home to call their own. They are also able to take care of mental health and medical appointments and in our current guidelines for COVID, we are all much safer with these virtual options."

- KentHOPE shelter



SHAG and KCHA housing

OUR CURRENT REALITY

Shag Resident Landscape



\$12,738 Average
Income Section-8



\$24,260 Average Income



73 Average Age



69% Women



16% Section-8 Vouchers



29% Disabled



12% Under Age 62

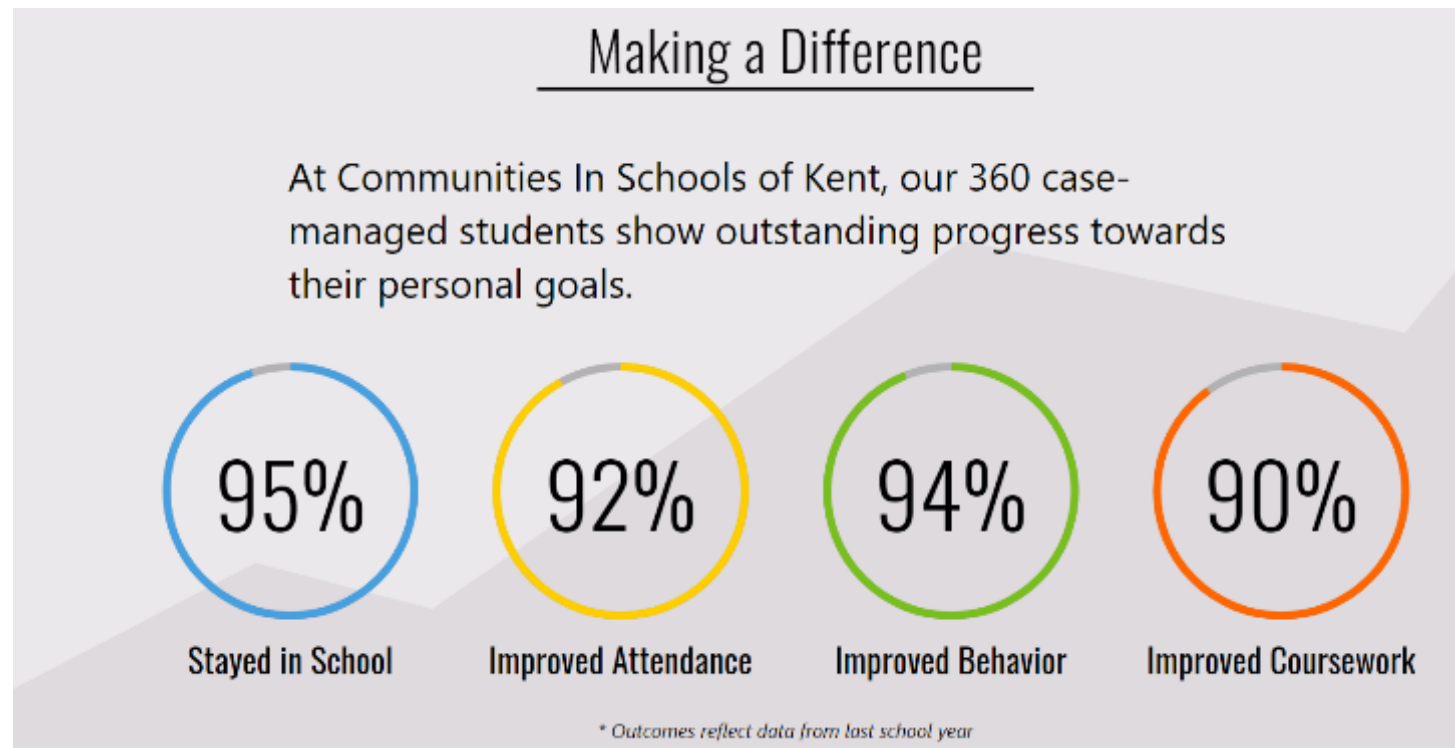


SHAG and KCHA housing





Communities in Schools of Kent



From Communities in Schools of Kent - <https://kent.ciswa.org/>



Communities in Schools of Kent



KCLS TeleConnect

Bridging the technology gap by providing equipment and private space for online health and social service appointments at the library





Why is it needed?

Addresses barriers to:

- Connectivity
- Equipment
- Digital Literacy
- Transportation





How Does it Work?

Service provider reserves a room and provides Zoom link

Patron arrives at library

KCLS staff sets up iPad and logs in for the patron

Patron and provider have appointment

KCLS staff logs out and sanitizes room



5 Pilot Locations



Enumclaw



Federal Way 320th



Skyway



Tukwila



Woodmont





Librarians testing the equipment

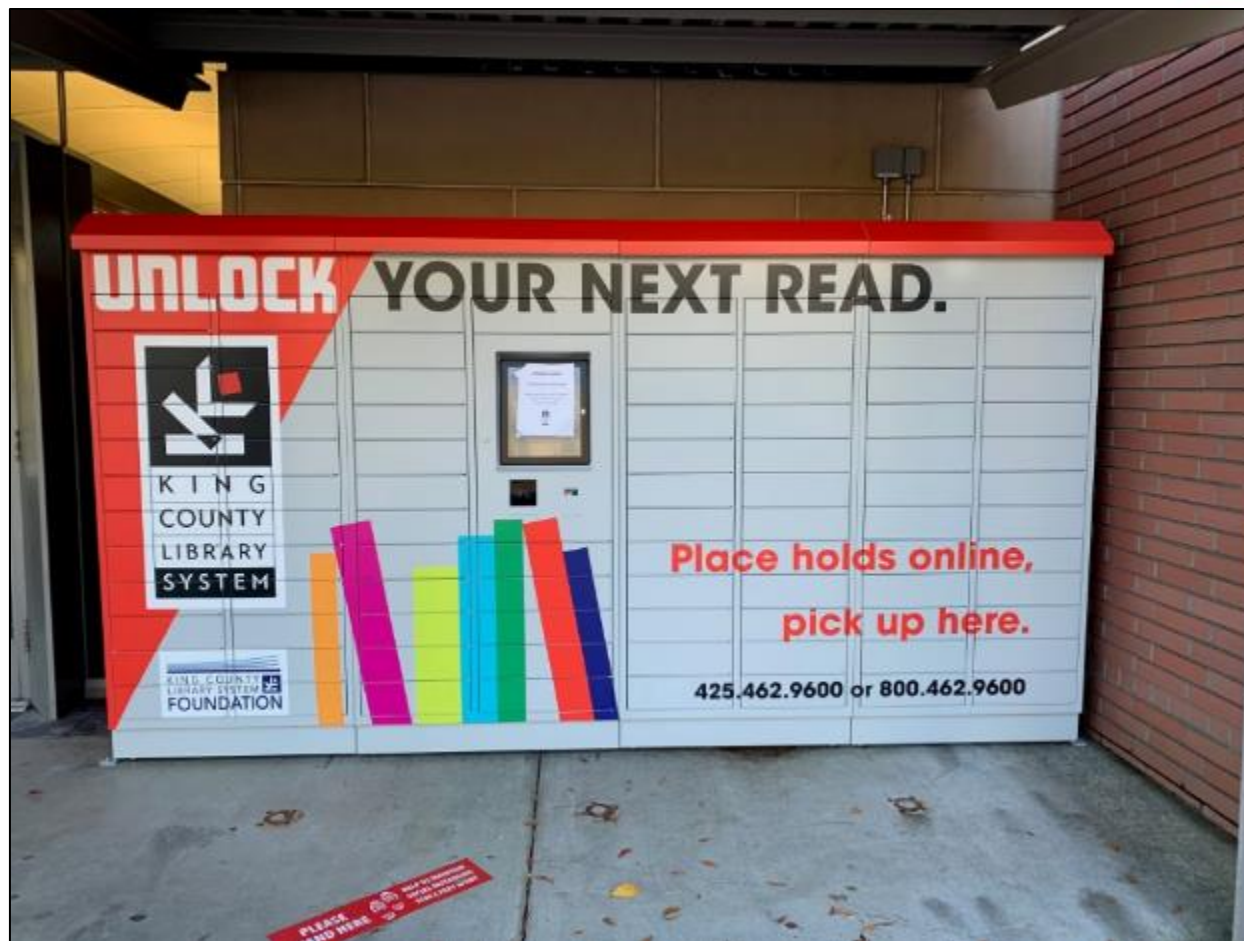


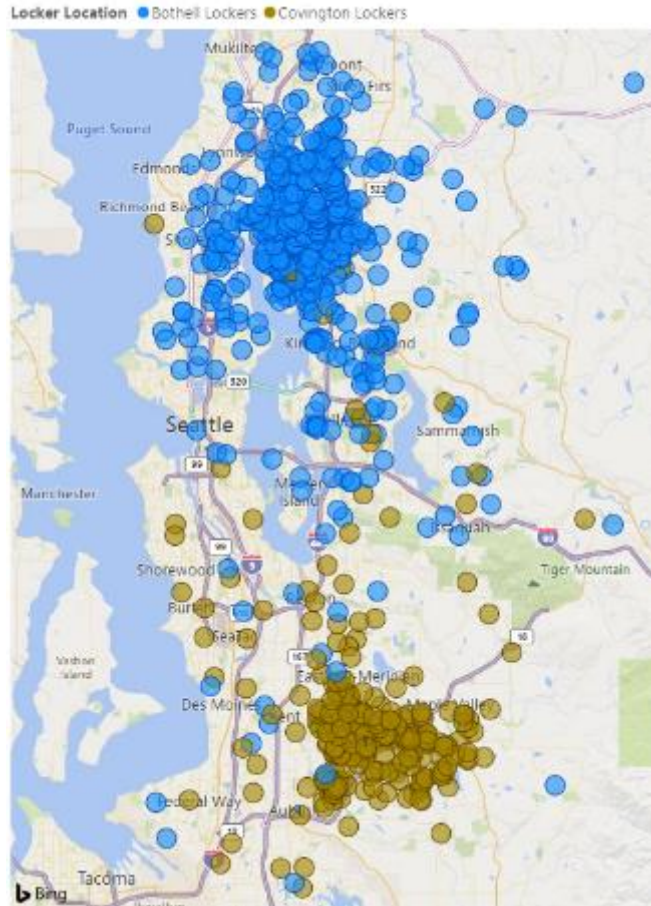
Executive Director dropped in
during testing





Lockers





Patrons across the county use lockers at two locations – Bothell and Covington

- Items are held for three days in one location, one day in another
- Median time from notice to pick-up is 27 hours
- Holds do not expire on closed service days
- 16,772 items were requested for locker pick-up from October 2020 thru February 2021

“Dear @KCLS, are you going to add more pickup lockers?”

- Demand at Bothell exceeds capacity of the lockers
 - Reducing pick-up window from three to one day to move materials through more quickly
- Some KCLS libraries are not suitable sites for locker installation
 - Physical layout of some buildings does not meet power/network needs
 - New locker design addresses issues of dampness





Questions?

Contact Angelina Benedetti,
Interim Director of Library Outreach,
Programs and Services
King County Library System
angelina@kcls.org



SPECIAL DISTRICTS

**UNDERSTANDING THE SPECIAL DISTRICTS 2021-2022
FUNDING LANDSCAPE & EMERGING OPPORTUNITIES**

LIVE Q&A

Gloria Salazar

*Chief Executive Officer,
San Joaquin Regional
Transit District*

Angelina Benedetti

*Interim Director of Library Outreach,
Programs and Services for the King
County Library System (KCLS),
King County, WA*

Joe Morris

*Deputy Chief Innovation
Officer, e.Republic*

MODERATOR Dustin Haisler

Chief Innovation Officer, e.Republic

SPECIAL DISTRICTS

**UNDERSTANDING THE SPECIAL DISTRICTS 2021-2022
FUNDING LANDSCAPE & EMERGING OPPORTUNITIES**

**THANK YOU
TO OUR
CORPORATE
PARTNER**



AT&T



SPECIAL DISTRICTS

**UNDERSTANDING THE SPECIAL DISTRICTS 2021-2022
FUNDING LANDSCAPE & EMERGING OPPORTUNITIES**

**THANK
YOU FOR
JOINING US**

This webinar will be available on-demand at:
webinars.govtech.com

For questions regarding this presentation, contact:

Jessica Walton
Government Technology
jwalton@erepublic.com

WEBINAR **government
technology**

SPECIAL DISTRICTS

**UNDERSTANDING THE
SPECIAL DISTRICTS 2021-2022
FUNDING LANDSCAPE &
EMERGING OPPORTUNITIES**

SPONSORED BY:



August 18, 2021
#govtechlive